

**OTX2 Antibody (Center)**  
**Purified Rabbit Polyclonal Antibody (Pab)**  
**Catalog # AP20843c****Specification**

---

**OTX2 Antibody (Center) - Product Information**

Application	WB,E
Primary Accession	<a href="#">P32243</a>
Reactivity	Human
Host	Rabbit
Clonality	Polyclonal
Isotype	Rabbit IgG
Calculated MW	31636

**OTX2 Antibody (Center) - Additional Information****Gene ID** 5015**Other Names**

Homeobox protein OTX2, Orthodenticle homolog 2, OTX2

**Target/Specificity**

This OTX2 antibody is generated from a rabbit immunized with a KLH conjugated synthetic peptide between 102-135 amino acids from the Central region of human OTX2.

**Dilution**

WB~~1:1000

E~~Use at an assay dependent concentration.

**Format**

Purified polyclonal antibody supplied in PBS with 0.09% (W/V) sodium azide. This antibody is purified through a protein A column, followed by peptide affinity purification.

**Storage**

Maintain refrigerated at 2-8°C for up to 2 weeks. For long term storage store at -20°C in small aliquots to prevent freeze-thaw cycles.

**Precautions**

OTX2 Antibody (Center) is for research use only and not for use in diagnostic or therapeutic procedures.

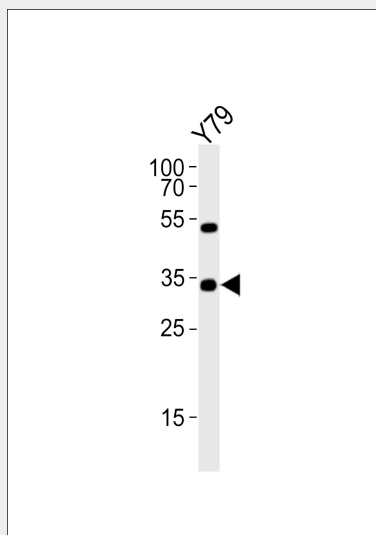
**OTX2 Antibody (Center) - Protein Information****Name** OTX2

**Function** Transcription factor probably involved in the development of the brain and the sense organs. Can bind to the bicoid/BCD target sequence (BTS): 5'-TCTAATCCC-3'.

**Cellular Location**  
Nucleus.**OTX2 Antibody (Center) - Protocols**

Provided below are standard protocols that you may find useful for product applications.

- [Western Blot](#)
- [Blocking Peptides](#)
- [Dot Blot](#)
- [Immunohistochemistry](#)
- [Immunofluorescence](#)
- [Immunoprecipitation](#)
- [Flow Cytometry](#)
- [Cell Culture](#)

**OTX2 Antibody (Center) - Images**

Western blot analysis of lysate from Y79 cell line, using OTX2 Antibody (Center)(Cat. #AP20843c). AP20843c was diluted at 1:1000. A goat anti-rabbit IgG H&L(HRP) at 1:10000 dilution was used as the secondary antibody. Lysate at 35ug.

**OTX2 Antibody (Center) - Background**

Probably plays a role in the development of the brain and the sense organs. Can bind to the BCD target sequence (BTS): 5'-TCTAATCCC-3'.

**OTX2 Antibody (Center) - References**

Simeone A.,et al.EMBO J. 12:2735-2747(1993).  
Perrault I.,et al.Submitted (AUG-2000) to the EMBL/GenBank/DDBJ databases.  
Fong S.L.,et al.Curr. Eye Res. 18:283-291(1999).  
Ota T.,et al.Nat. Genet. 36:40-45(2004).  
Mural R.J.,et al.Submitted (JUL-2005) to the EMBL/GenBank/DDBJ databases.